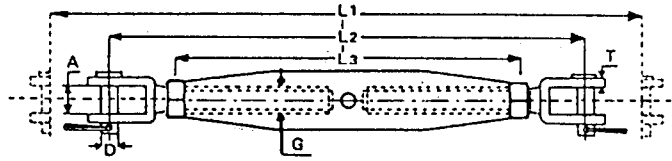


STAINLESS STEEL RIGGING SCREWS

CLOSED BODY - JAW AND JAW

UNTESTED

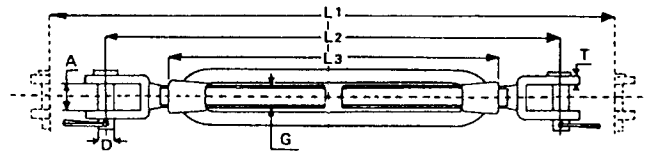


THREAD G DIA mm	D mm	A mm	L3 mm	L2 mm	L1 mm	WEIGHT EACH KGS
6	6	7	95	140	220	0.08
8	8	8	105	170	260	0.14
10	10	10	125	200	310	0.26
12	12	14	145	245	375	0.47
16	16	16	168	310	460	0.71
20	19	20	210	390	490	0.98

STAINLESS STEEL RIGGING SCREWS

OPEN BODY - JAW AND JAW

UNTESTED



THREAD G DIA mm	D mm	A mm	L3 mm	L2 mm	L1 mm	WEIGHT EACH KGS
5	5	6	70	110	165	0.05
6	6	7	90	140	210	0.10
8	8	8	120	180	280	0.19
10	10	10	150	220	340	0.29
12	12	14	200	300	370	0.62