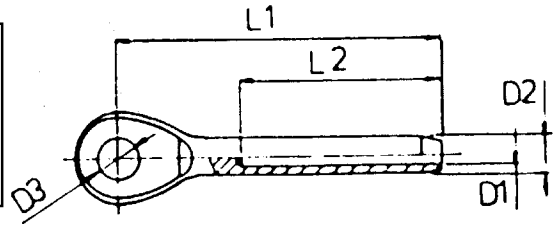


STAINLESS STEEL SWAGE EYES

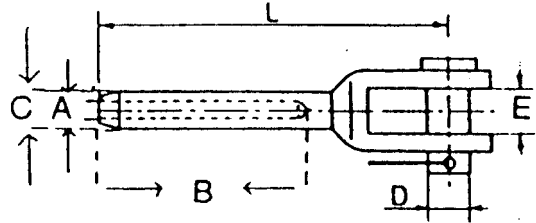
UNTESTED



WIRE DIA mm	D1 mm	D2 mm	D3 mm	L1 mm	L2 mm	WEIGHT EACH KGS
3	3.3	6.5	8.0	55	36	0.02
4	4.3	7.5	10.0	61	39	0.03
5	5.3	9.0	12.0	76	50	0.04
6	6.3	12.5	12.5	90	62	0.09
8	8.3	16.0	14.5	110	85	0.18
10	10.3	17.5	16.4	132	90	0.24

STAINLESS STEEL SWAGE JAWS

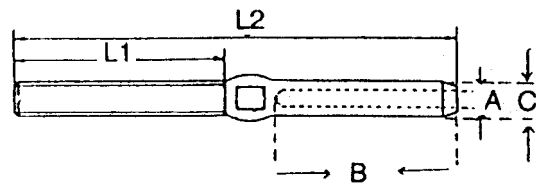
UNTESTED



WIRE DIA mm	L mm	A mm	B mm	C mm	D mm	E mm	WEIGHT EACH KGS
3	65	3.3	32	6.3	5	7	0.04
4	77	4.3	40	7.5	6	10	0.05
5	88	5.3	57	9.0	8	12	0.07
6	106	6.3	63	12.5	9	14	0.09
8	145	8.3	85	16.1	14	15	0.29
10	150	10.3	89	17.8	16	17	0.35

STAINLESS STEEL SWAGE STUDS

UNTESTED



THREAD DIA mm	WIRE DIA mm	L1 mm	L2 mm	A mm	B mm	C mm.	WEIGHT EACH KGS
6	3	48	100	3.3	39	6.3	0.03
8	4	57	117	4.3	45	7.5	0.04
10	5	62	130	5.3	51	9.0	0.05
12	6	80	162	6.3	64	12.5	0.07
16	8	100	195	8.3	76	16.0	0.30
20	10	119	230	10.3	89	18.0	0.39