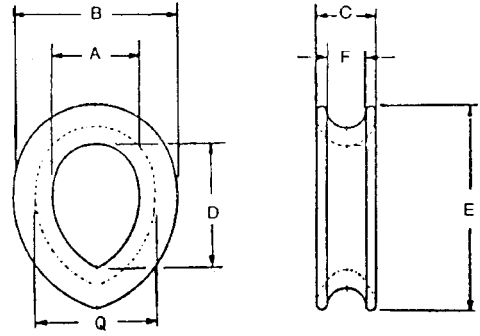


## WIRE ROPE THIMBLES

HEART SHAPED TO B.S.S. 464 - TABLE 1 - 1958

GALVANISED

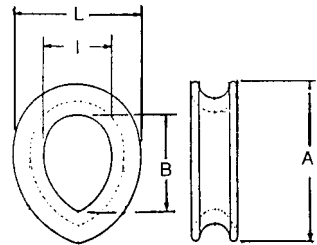


ROPE DIA in	A in	B in	C in	D in	E in	F (min) in	Q in	WEIGHT EACH KGS
1/4	5/8	1.7/16	7/16	1	1.7/8	1/4	1	0.04
5/16	7/8	1.1/2	1/2	1.5/16	2.1/8	5/16	1.1/8	0.06
3/8	1	1.7/8	9/16	1.1/2	2.1/2	13/32	1.3/8	0.09
7/16	1.1/8	2.1/8	11/16	1.5/8	2.7/8	1.1/2	1.1/2	0.12
1/2-9/16	1.1/4	2.5/16	13/16	1.3/4	3.1/8	9/16	1.11/16	0.16
5/8	1.5/8	2.15/16	7/8	2.5/16	3.7/8	5/8	2.1/4	0.28
11/16	1.3/4	3.1/8	1.1/8	2.5/8	4.1/4	3/4	2.3/8	0.36
3/4	2	3.5/8	1.1/8	2.7/8	4.7/8	13/16	2.3/4	0.50
7/8	2.1/4	4	1.1/4	3.1/4	5.1/4	7/8	3	0.70
15/16	2.1/2	4.5/16	1.5/16	3.5/8	5.3/4	1	3.5/16	0.93
1	2.3/4	4.11/16	1.3/8	4.1/4	6.3/8	1.1/16	3.9/16	1.20
1.1/8	3	5.1/4	1.1/2	4.3/8	7	1.1/8	4	1.40
1.1/4	3.3/4	6	1.5/8	5.1/4	7.3/4	1.5/16	4.3/4	1.60
1.3/8	4.1/8	6.7/8	1.7/8	6	9	1.1/2	5.3/8	2.60
1.1/2	4.1/2	7.3/4	2.1/8	6.1/2	10	1.5/8	5.7/8	3.59
1.5/8	4.1/2	7.3/4	2.3/16	6.1/2	10	1.11/16	5.7/8	3.72
1.3/4	5	9	2.1/4	7	11.1/4	2	7	6.64
1.7/8	5.1/4	9.3/4	2.5/8	7.1/2	12.1/2	2.3/8	7.1/2	7.40
2	5.1/2	10.1/8	2.3/4	8	13	2.1/2	7.3/4	7.99

## COMMERCIAL PATTERN THIMBLES

FOR WIRE ROPE

ZINC PLATED



ROPE DIA mm	O/A LENGTH A in	O/A LENGTH A mm	O/A WIDTH L mm	INSIDE LENGTH B mm	INSIDE WIDTH I mm	WEIGHT PER 100 KGS
4	1	25	19	16	11	0.40
5	1.1/4	31	22	22	16	0.80
6	1.1/2	37	29	26	19	1.40
8	2	51	38	34	24	2.80
10	2.1/2	64	44	42	32	4.80
12	3	76	57	51	38	8.00
16	3.1/2	89	64	60	42	15.00
20	4.1/2	115	79	76	51	25.00
22	5	127	89	83	54	32.00
26	6	152	105	102	68	66.00